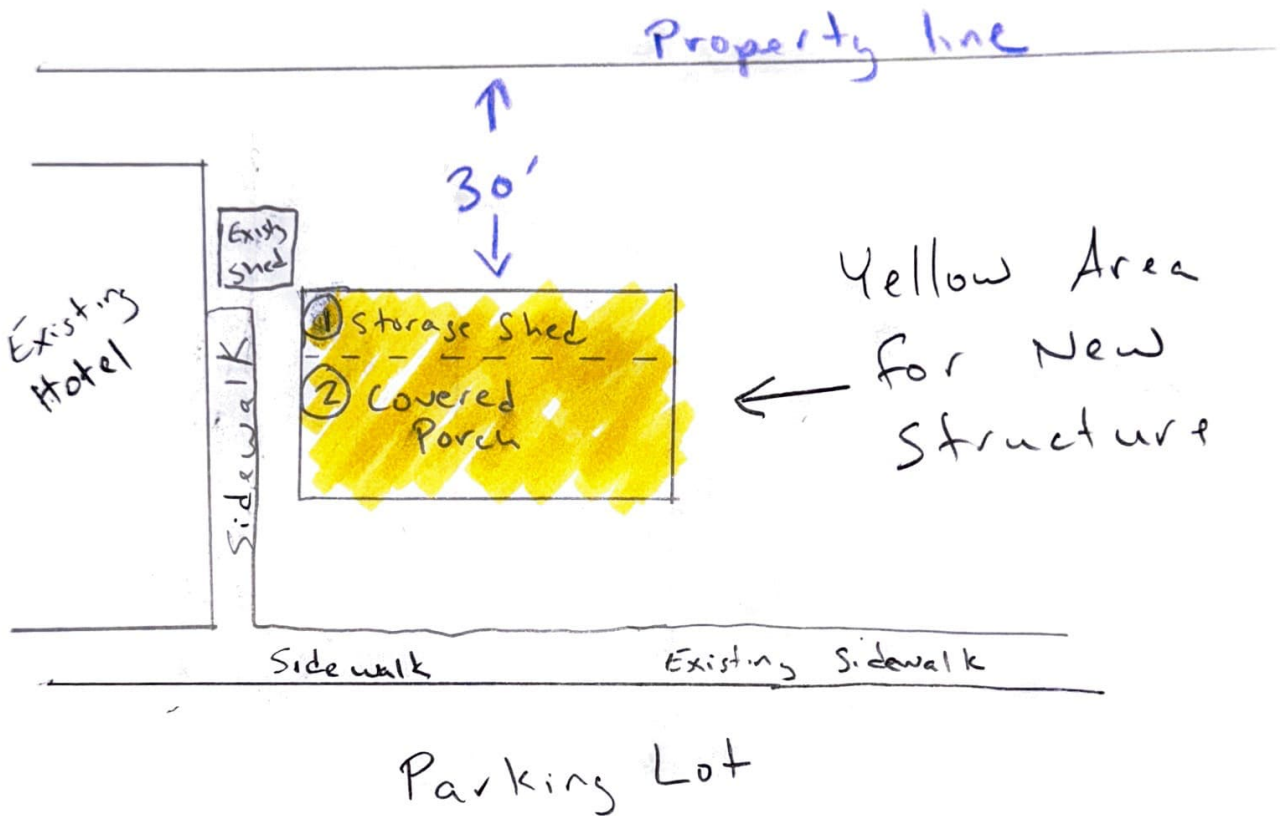


Covered structure containing:

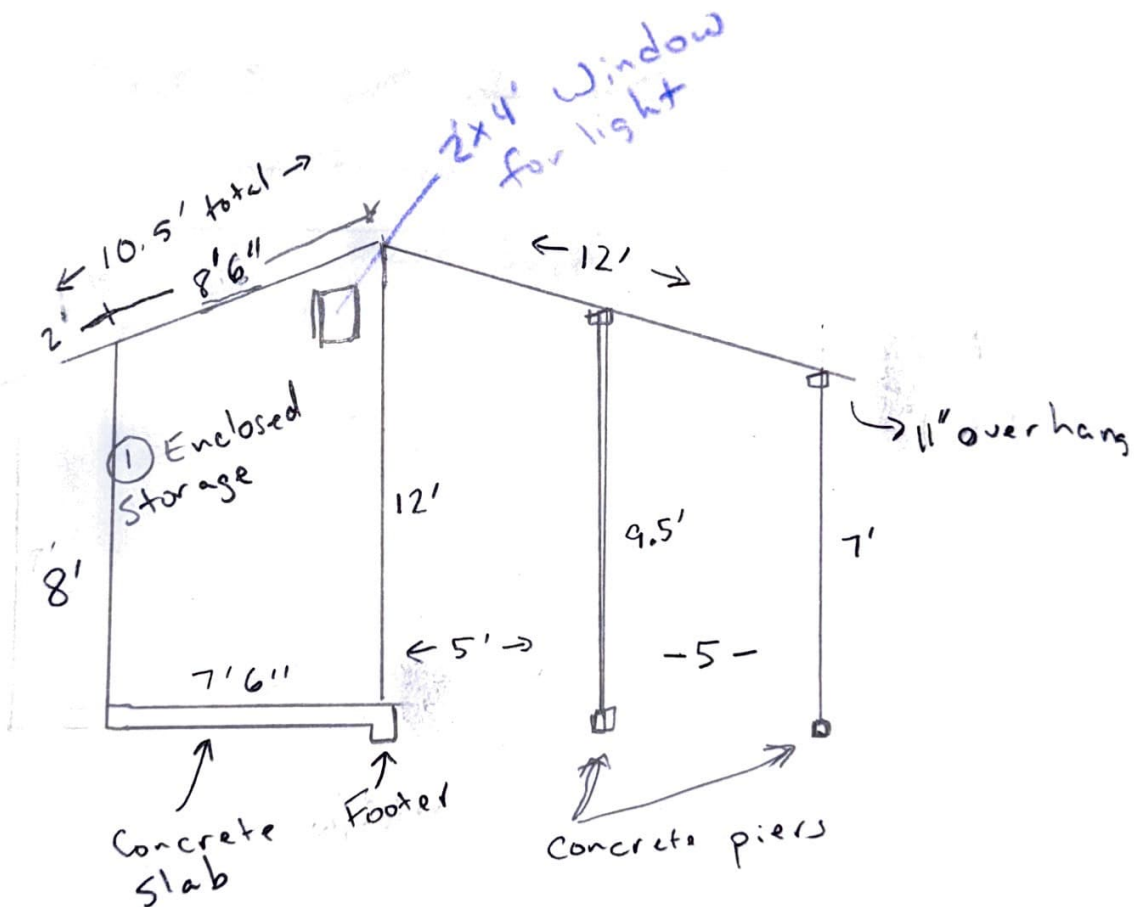
1. Enclosed Storage Shed in Back - with concrete floor.
2. Large Covered area in Front - with just gravel and a place for picnic tables.

Below is a drawing of the location for the new structure - which will be 30 feet away from the back of the property line - there is a required 15' easement due to the sewer lines in back of property.



Side View

1. Storage Area: 4" concrete slab. #4 rebar, 2' on center. Footer - running entire length - 12" x 12" footer - also with #4 rebar. Roof - will be 6.4" drop per foot
2. Covered Porch area: Gravel/dirt, no slab. The Concrete Pier supports will be 12x12x12 concrete, #4 rebar, sitting 8" below ground. 4x6 post will be used and attached by metal saddles. Roof - 5" drop per foot
3. Roof: 2x6 at 16" on center. Plywood on top. Using slate tile on covered porch with furring strips, composite roof material on the enclosed storage area.

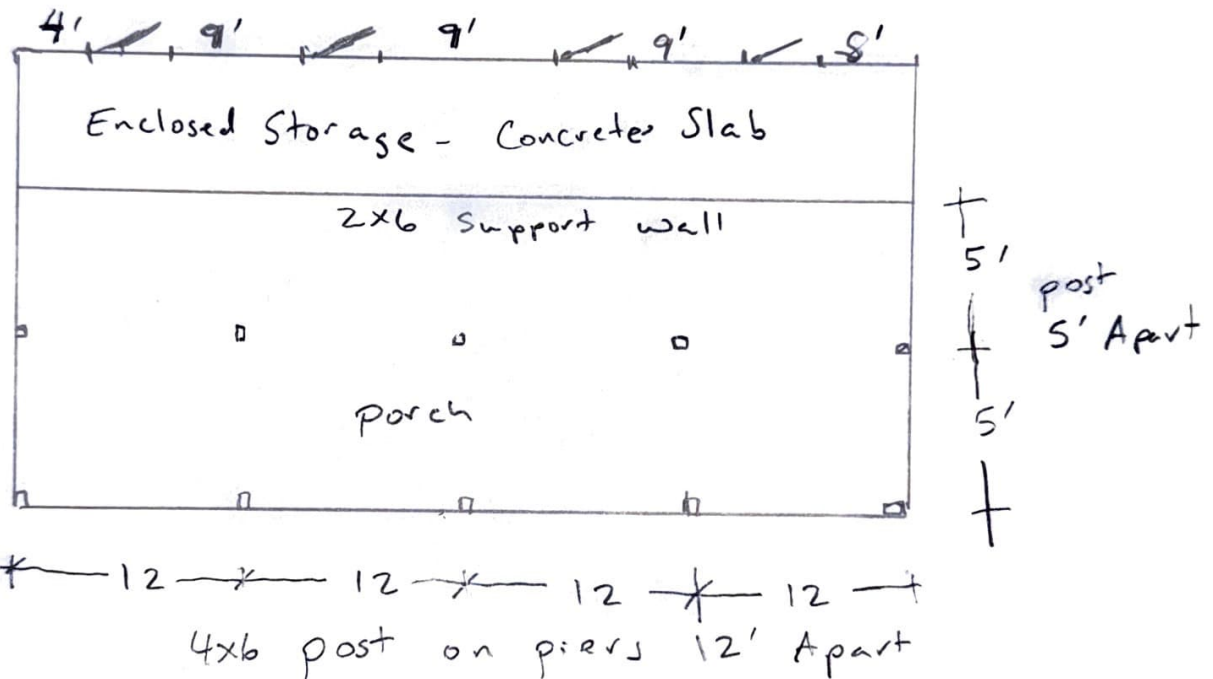


Both Sides will have a 12" over hang

Top View:

1. Storage Area - the 3 walls will be 2x4 construction, 16" on center, enclosed by exterior panelling. The main support wall in the middle will be 2x6 studs, 16" on center.
2. Porch Area - post will be 4x6, using saddles on top of concrete pier. Will be using 4x10 beams which will support the roof.

3' wide doors to access Storage



Beams 4x10 - with simpson ties to
2x6 rafters